

General Papercraft Instructions

Recommended Materials:

For Printing:

- 67lb Cardstock (Available at most office supply stores)
- Inkjet Printer

NOTE: Models as shown were printed on 67lb cardstock with an Inkjet printer. Other thicknesses of cardstock and other printer types such as laser printers will produce different results.

For Assembly:

- Scissors
- Craft/Hobby Knife
- Ruler or Straight Edge
- Empty(Inkless) Ballpoint Pen or Paperclip for scoring fold lines
- Various size wooden dowels or similar objects for forming cylinders/cones
- Cutting Mat
- PVA (White) glue. A craft type glue is recommended over "School" glue.

**ALWAYS USE CAUTION WHEN HANDLING SHARP/CUTTING TOOLS!
CHILDREN SHOULD NOT USE CUTTING TOOLS WITHOUT THE
SUPERVISION OF AN ADULT
NEVER CUT TOWARDS YOURSELF!**




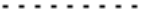
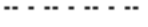
Recommended tools

Printing Instructions:

These papercraft model kits are supplied in Adobe Acrobat format. It is recommended to use Acrobats' "Fit to Page" option when printing.

Assembly and Assembly Techniques:

There are three types of lines:

- Solid Lines:  these indicate lines to be cut out
- Dashed Lines:  These indicate a Convex or Hill fold
- Dashed/Dotted Lines:  These indicate a Concave or Valley Fold

Using your inkless pen or scoring tool score all fold lines before you cut out your parts. For parts that are black or dark in color a black and white scoring/fold template has been provided to use as reference.

Using the photo or diagram type instructions cut out and assemble your model kit.

OPTION: You can use colored markers/pencils to color the cut edges of parts and tabs before assembly. This results in a cleaner more professional appearing finished model. For instructional purposes the models shown in photos/assembly photos were built without coloring edges and tabs.

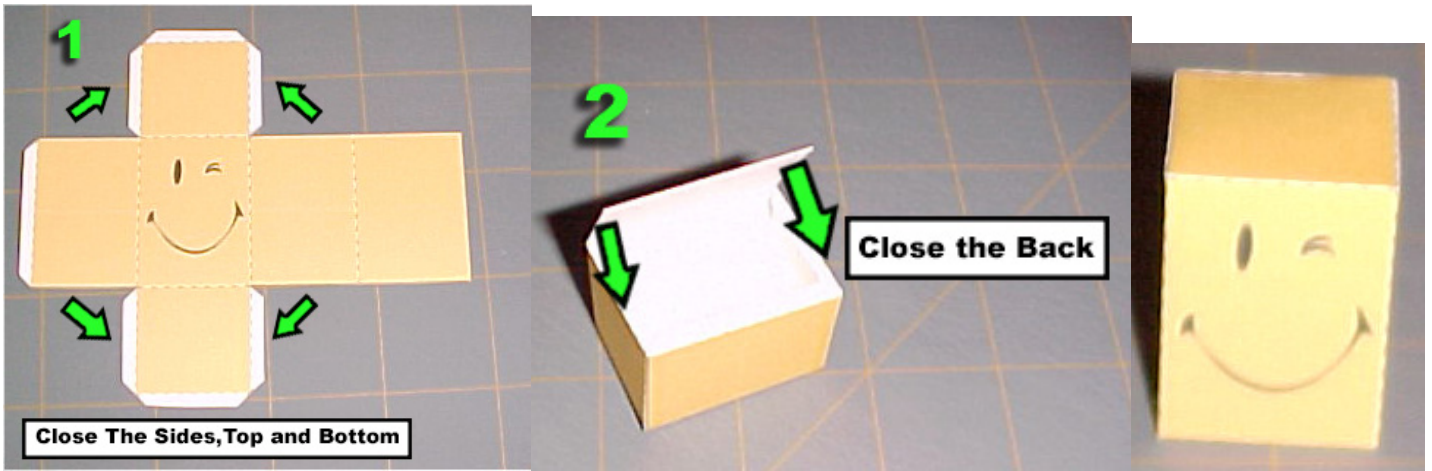
IMPORTANT! Don't worry if you mess up a part. The BEST thing about papercraft models is that you can always print out another page!

Most papercraft is broken down into four basic geometric types:

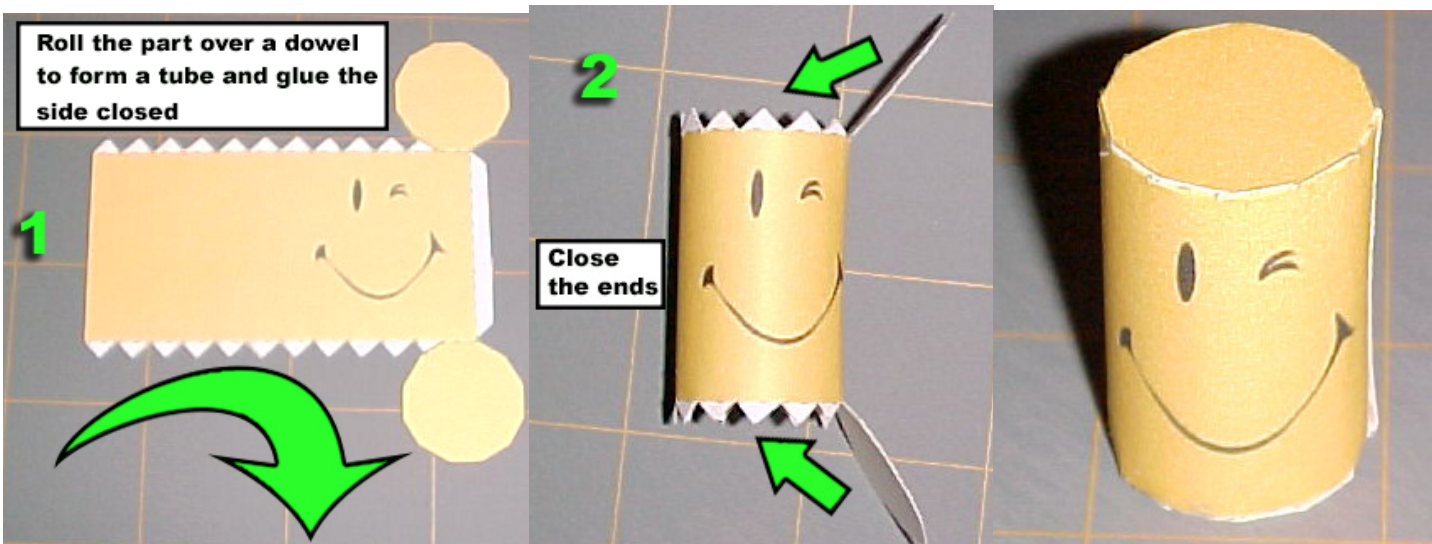
- CUBES
- CYLINDERS/TUBES
- CONES
- SPHERES

A few tips on assembling each type will help you achieve a better finished model

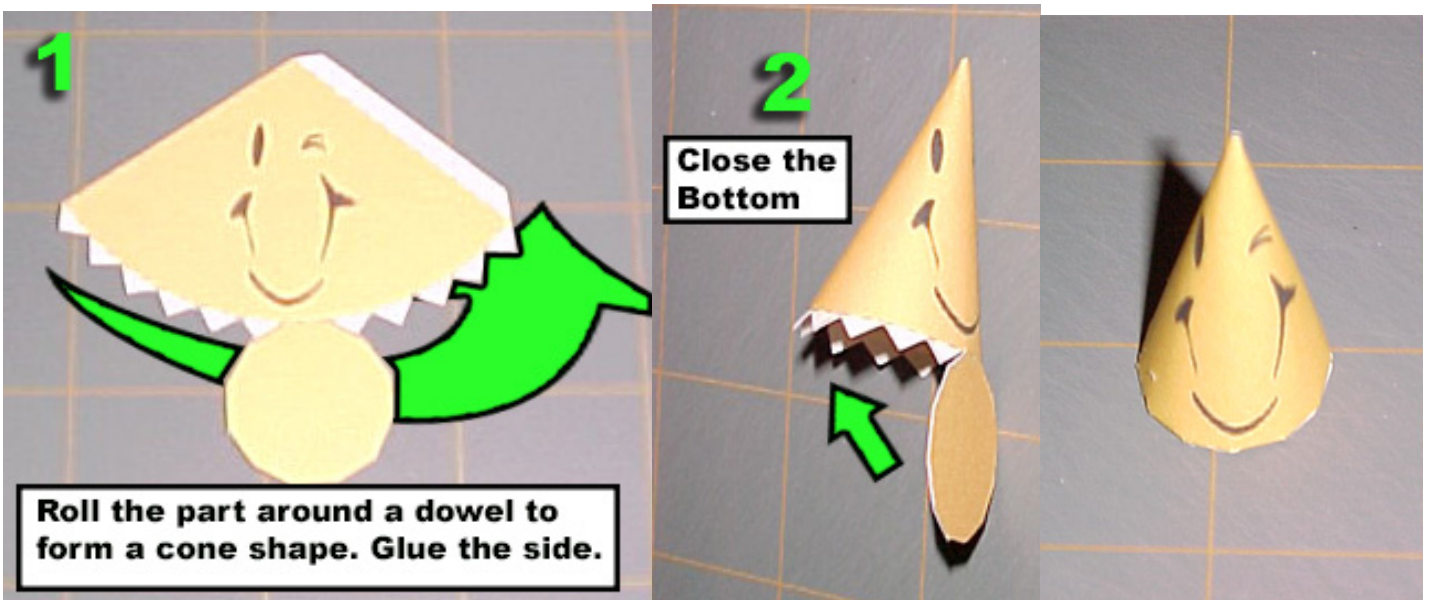
CUBES:



CYLINDERS/TUBES:



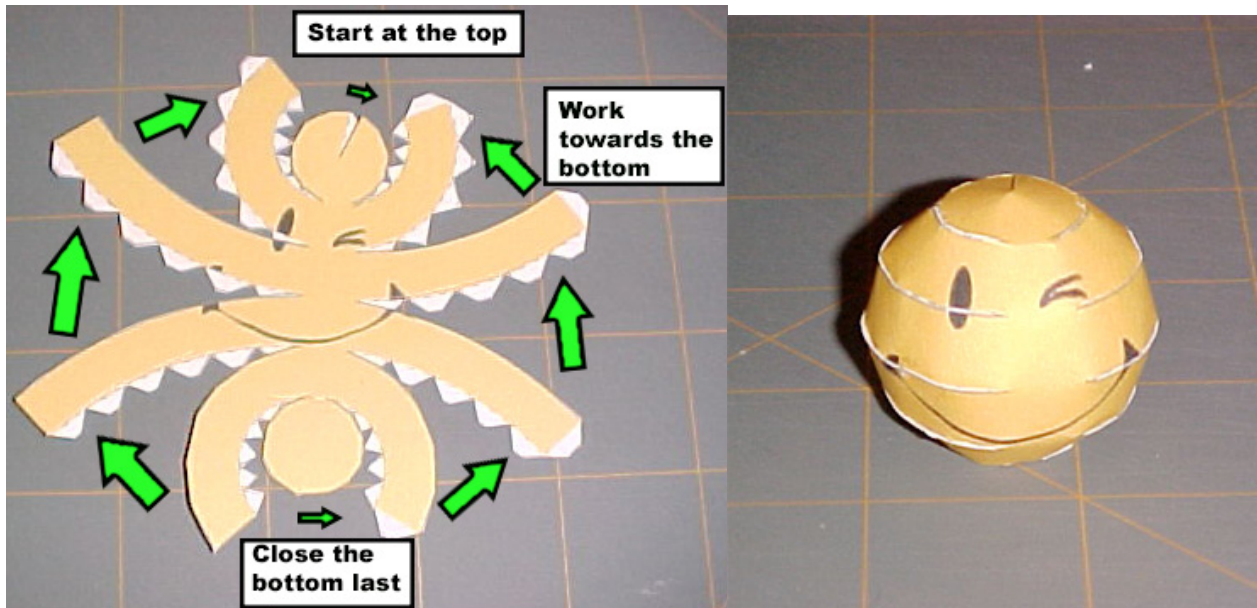
CONES:



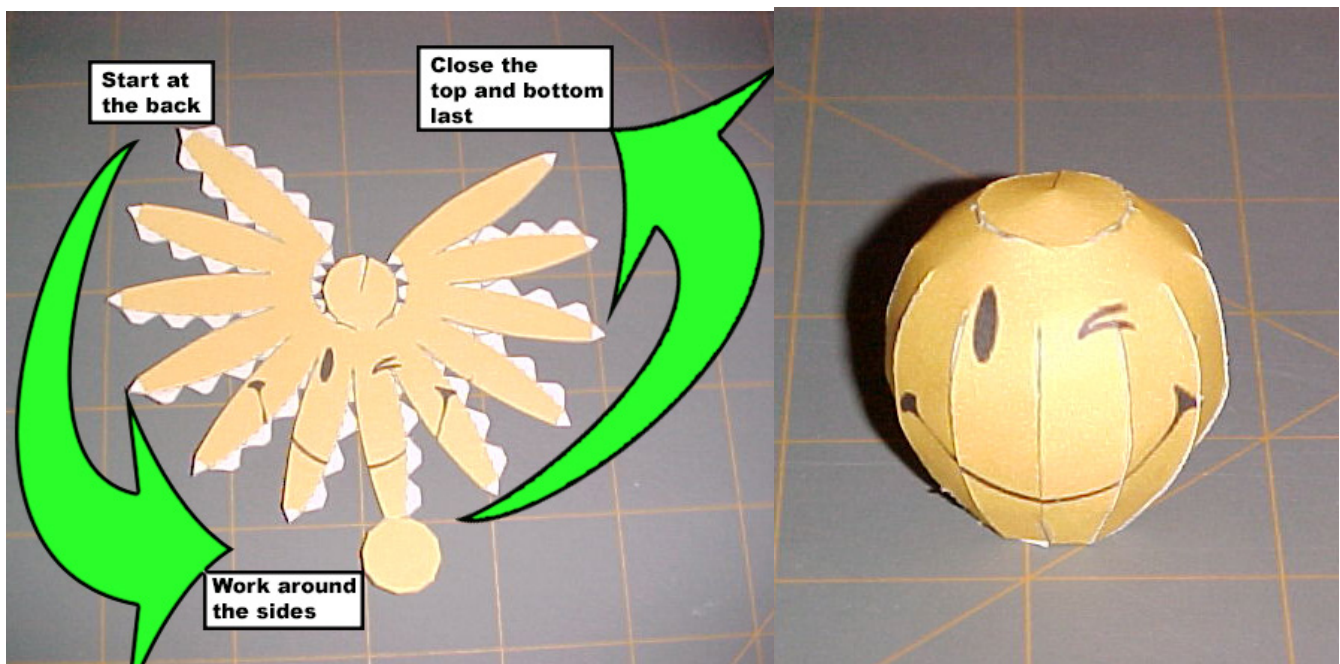
SPHERES:

Spheres are usually in one of two types: **HORIZONTALLY** divided and **VERTICALLY** divided

HORIZONTALLY DIVIDED SPHERE:



VERTICALLY DIVIDED SPHERE:



Additional Tips:

- Don't get too far ahead. Glue one or two tabs at a time.
- Allow glued tabs adequate time to dry before gluing the next tabs.
- Don't apply too much glue. This can cause discoloration of parts and warping. Use a tooth pick, small brush or a small strip of cardstock to apply glue.
- Have fun! Enjoy your model!