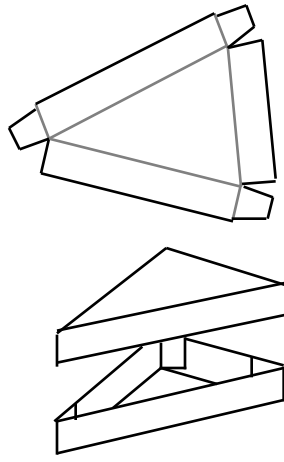
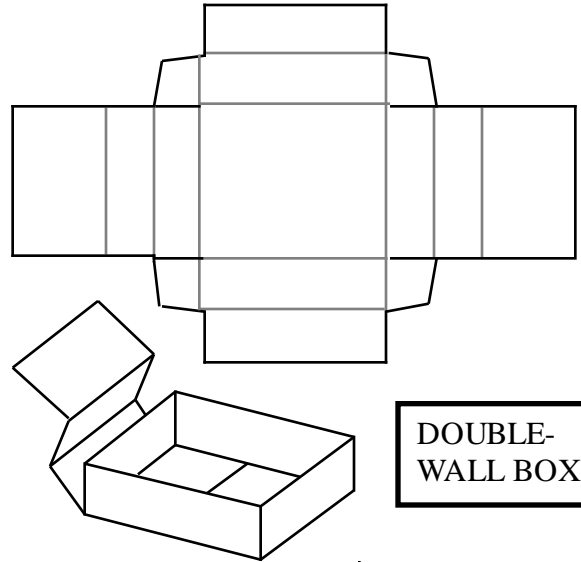


ALL OF THESE BOXES can easily be made with the **Boxmakers** shown in this catalog ... for fun and profit .. in the office, home, shop, library, museum or lab ... use them for storage or shipping -- or turn them into architectural models, mobiles, toys, gifts and whatever.

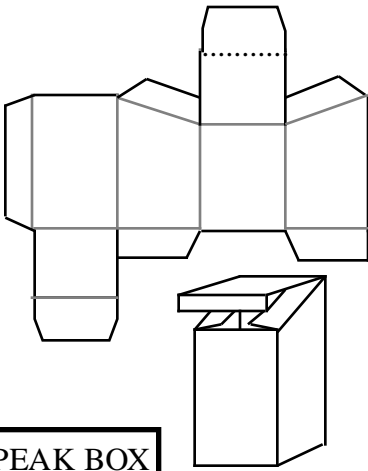
See next page for details.
Order from the address below
Absolute satisfaction is unconditionally guaranteed.



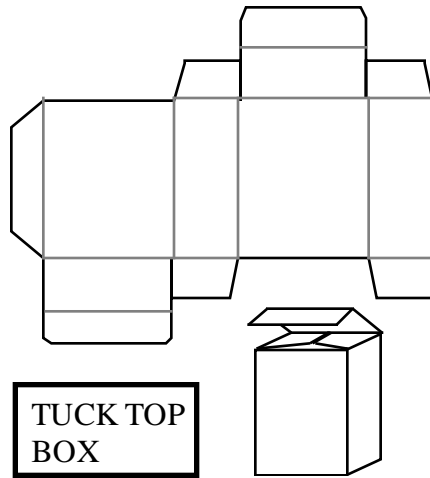
TRIANGLE BOX



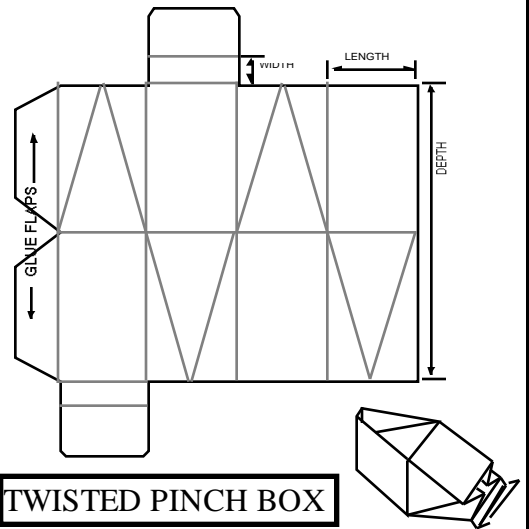
DOUBLE-WALL BOX



PEAK BOX

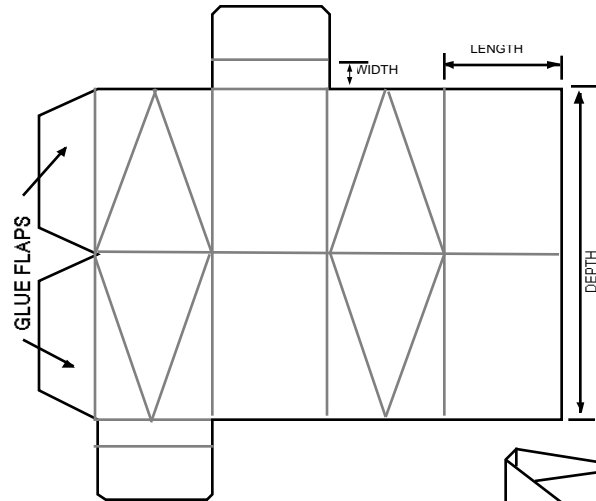
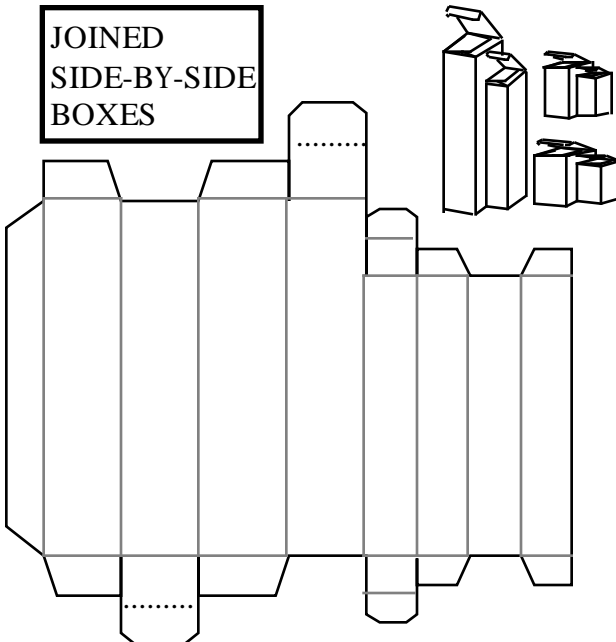


TUCK TOP BOX



TWISTED PINCH BOX

JOINED SIDE-BY-SIDE BOXES



STRAIGHT PINCH BOX

MAKE TUCK TOP BOXES ...

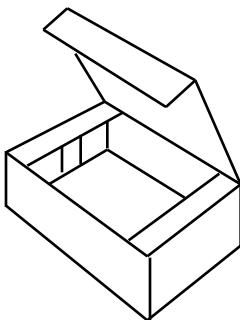
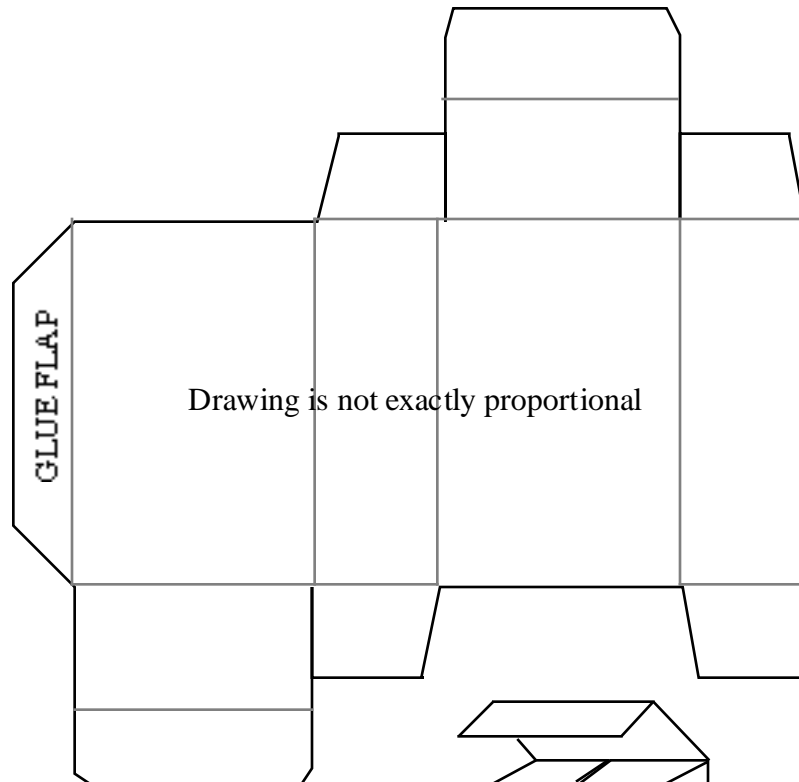
Once you have made a few telescoping boxes with the Boxmaker Originale (tm) you will be ready to make boxes like like the TUCK TOP box shown here.

- 1 (a) Use the side of the Boxmaker Originale (tm) marked "BOTTOM" -- (the spacing from the guide rail to the scoring slots is the same as the nominal marked dimension on "BOTTOM") -- (b) Cut cardstock blank to size as discussed below.
- 2 Score at the appropriate dimensions parallel to the edges and cut away the material outside the box you want. For instance, if you want the box to be 3 x 2 x 8", with 1" dust flaps and a 1" glue flap -- you would (a) score at 1", 4", 6", and 9" parallel to the 8" vertical edge of the blank and (b) score at 1", 3", 11", and 13" from the 11" edge.
- 3 You should then be able to cut the notches for the flaps and a little clearance for the panels that fold inside. You can cut the width of the long flap down so it goes neatly in place.

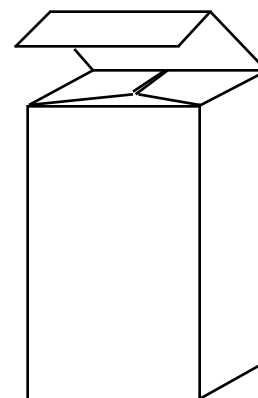
BLANK SIZE for a box with an opening length of 3", an opening width of 2" and a depth of 8"

Horizontal dimension
= 2 widths plus 2 lengths plus 1" glue flap
This adds to 11"

Vertical Dimension = 2 widths plus 1 depth plus two 1" flaps.
This adds to 14"



Dimensions and proportions can be changed to make boxes of various lengths, widths and depths -- as shown by these 2 completed boxes

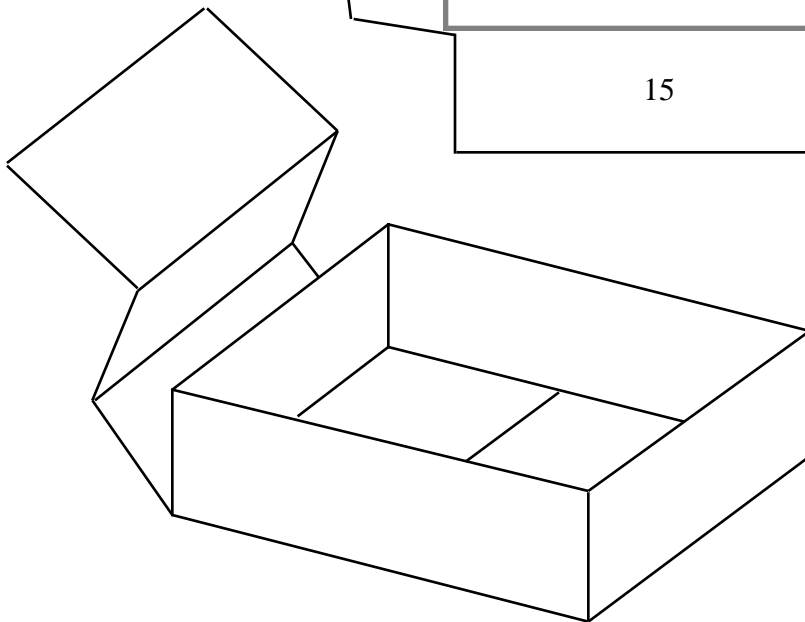
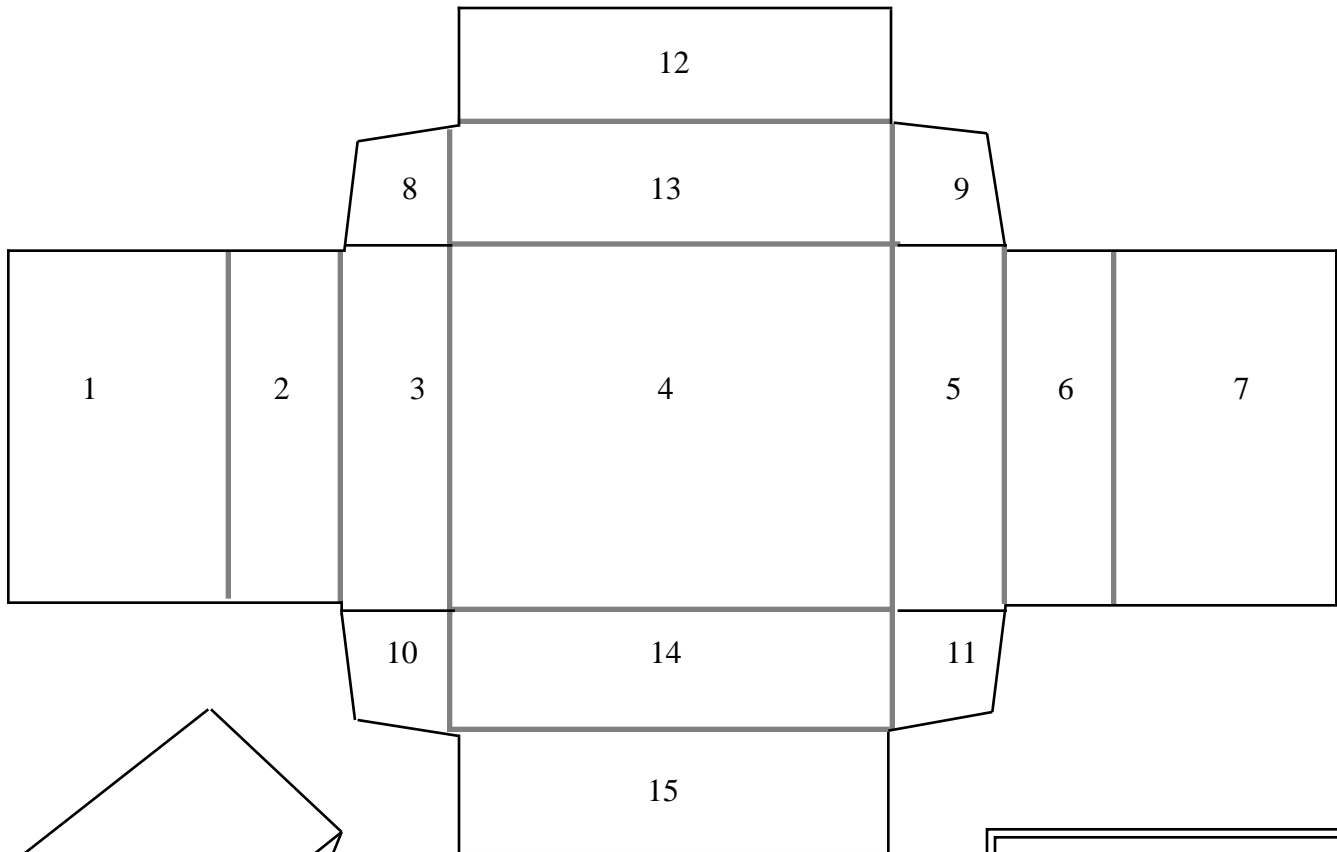


TRIPLE-DOUBLE BOX BOTTOM -- Can easily be made with the Boxmaker Originale (tm).

All four side walls and box bottom are double thickness after panels are folded over and in.

NOTES:

- 1 Use BOTTOM side of Boxmaker Originale(tm) to make bottom of this box.
- 2 Top of this box must be single wall. Double wall would make top too small to clear bottom.
- 3 All panels that fold in have to be trimmed slightly to provide clearance.
- 4 Panels 1 and 7 can be glued to panel 4 -- or not if they are cut to the proper size
- 5 If measurements are carefully made -- panels 1 and 7 will butt tightly against each other and this box bottom will hold together without glue.



**Wonderful for
making box
prototypes for
new products**

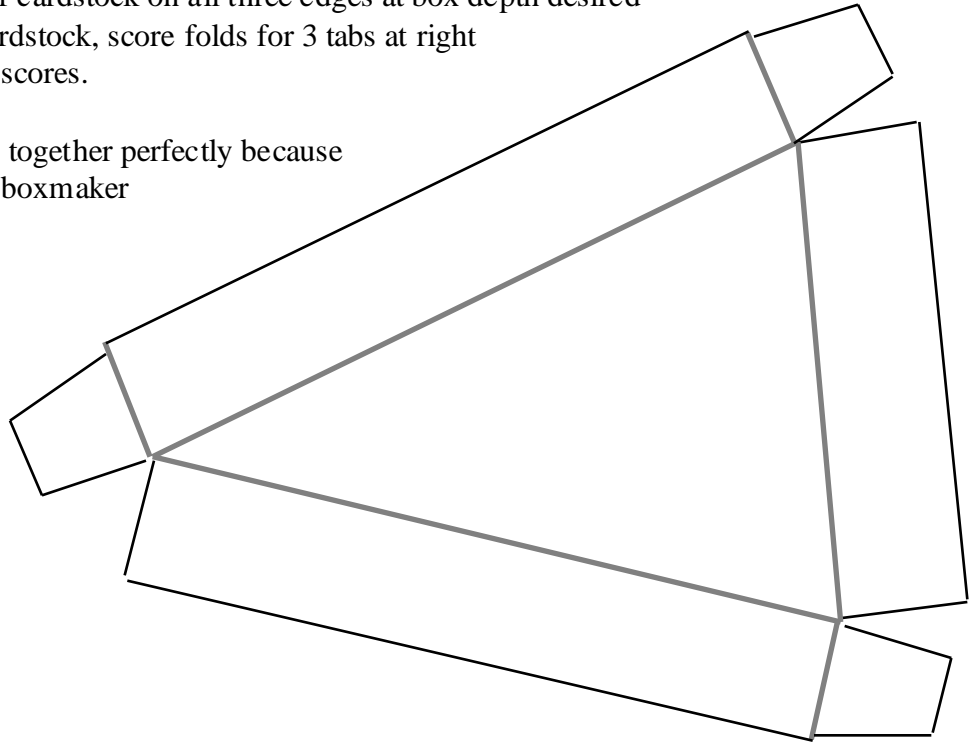
Please refer to Catalog # 9/02 when ordering

TRIANGULAR BOX --

- 1 Start with 2 triangular pieces of cardstock exactly the same size
- 2 Use side of Boxmaker Originale (tm) marked "BOTTOM"
- 3 Score one cardstock piece on all three edges at box depth desired.
- 4 Change to side of Boxmaker marked "TOP"
- 5 Score second side of cardstock on all three edges at box depth desired
- 6 On each piece of cardstock, score folds for 3 tabs at right angles to triangular scores.

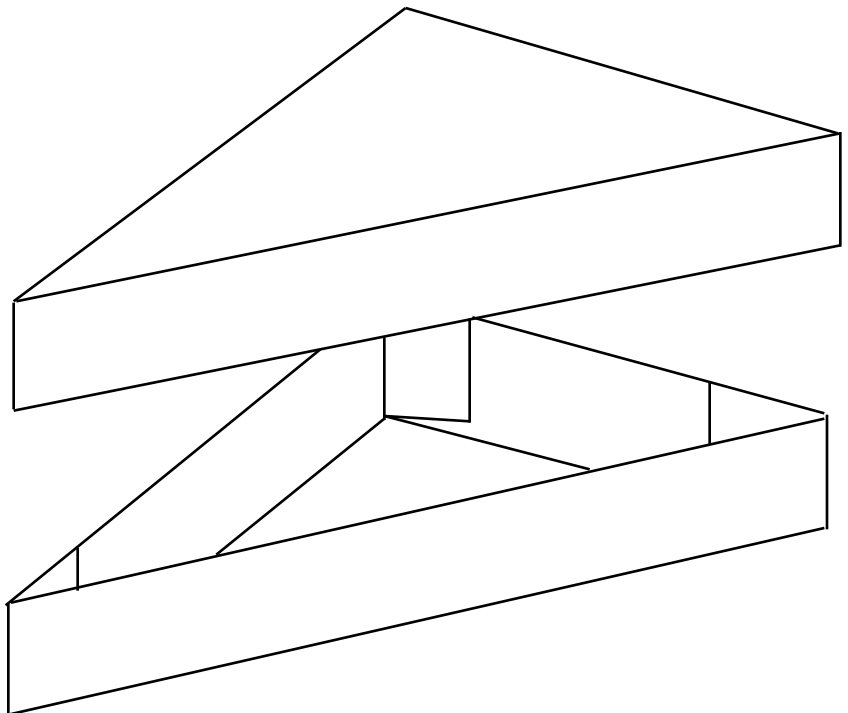
Box top and bottom will fit together perfectly because of patented construction of boxmaker

Can easily be made with the Boxmaker Originale (tm).



Boxes of any shape (pentagon, hexagon, or whatever) can be made using the principle involved here as long as the edges can all be placed against boxmaker guide rail

Make boxes of many geometric shapes.

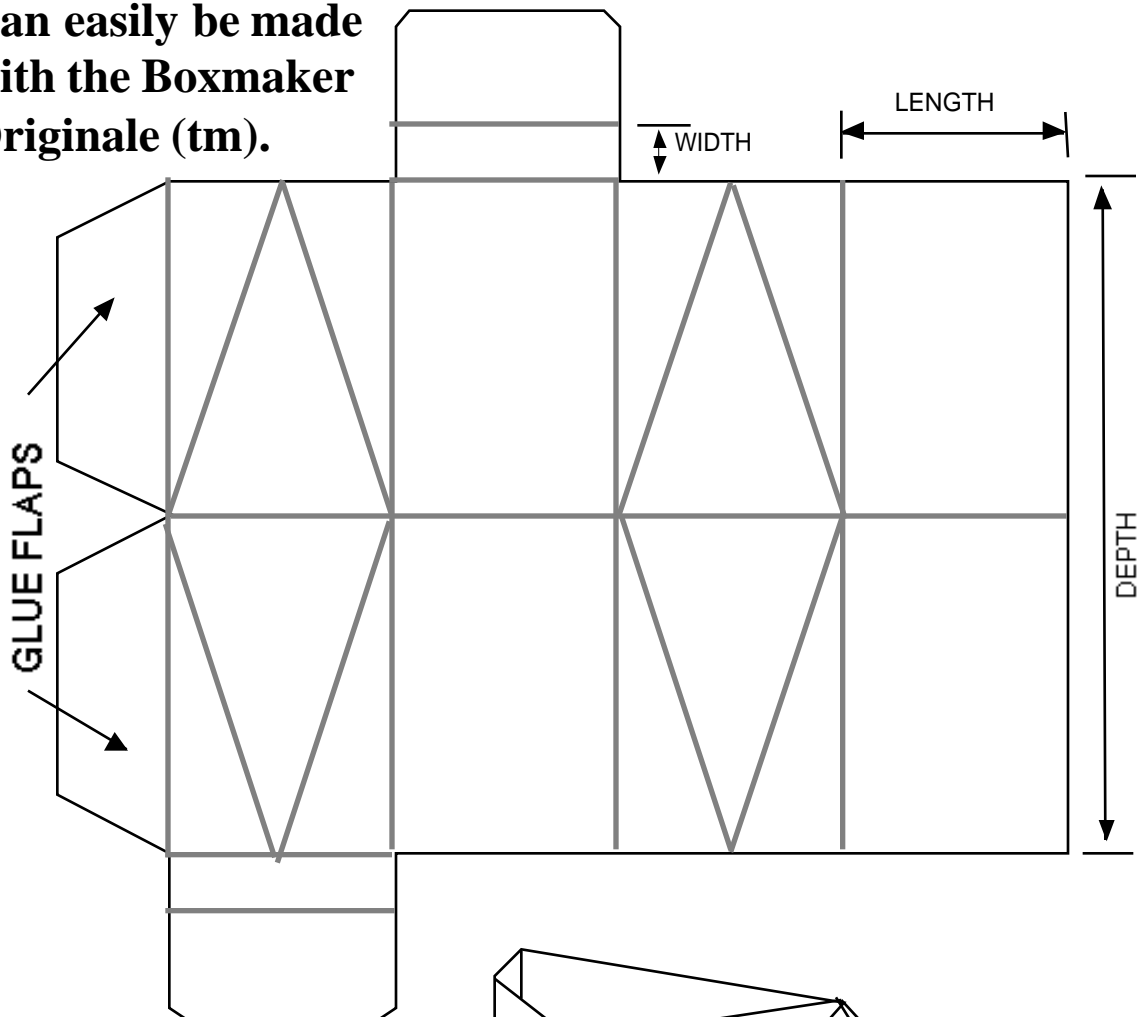


DOUBLE ENDED PINCH BOX LAYOUT

Can be scaled up or down to any size.
Use cardstock from about .015" to .030" thick

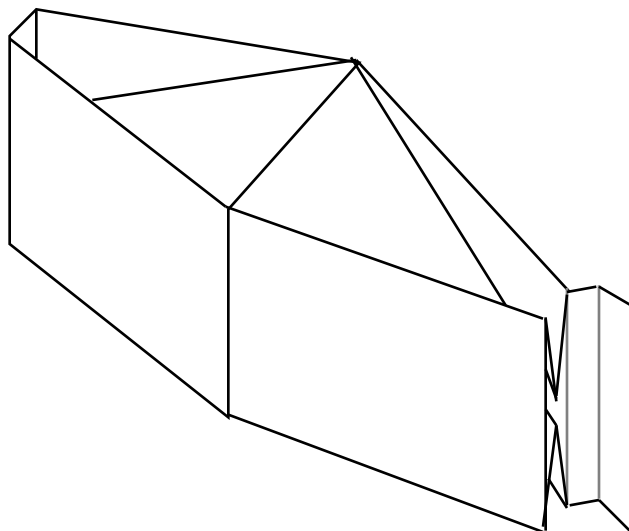
Dashed lines are scores.
Use "BOTTOM" side of
Boxmaker Originale (tm)

**Can easily be made
with the Boxmaker
Originale (tm).**



Notes:

- 1 Fold into tube shape
- 2 Outside of glue flap is glued to inside of opposite panel.
- 3 Four sides collapse in.
- 4 End tabs slip into openings at ends. One tab can be glued in place

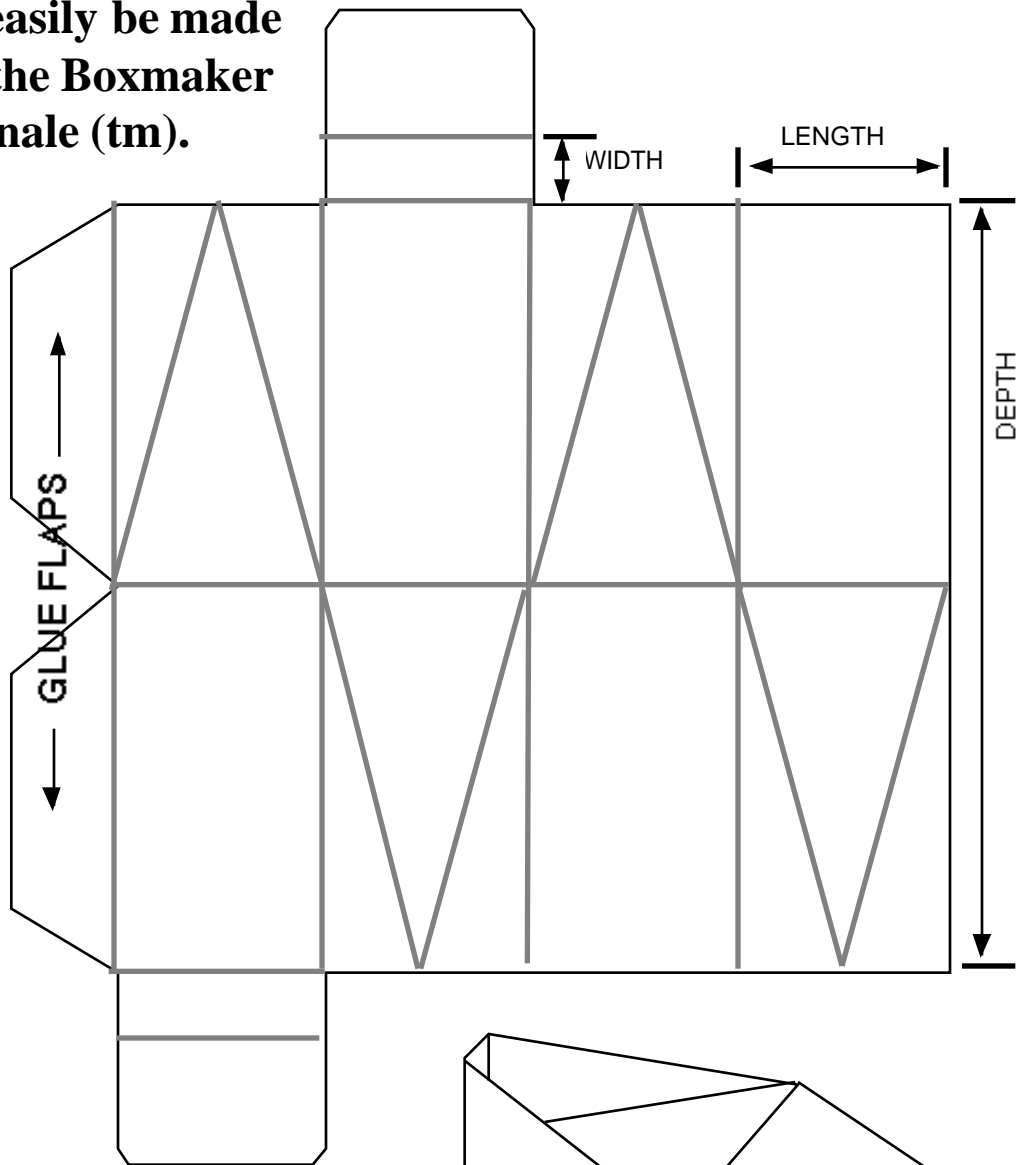


DOUBLE ENDED, TWISTED, PINCH BOX LAYOUT

Can be scaled up or down to any size.
Use cardstock from about .015" to .030" thick

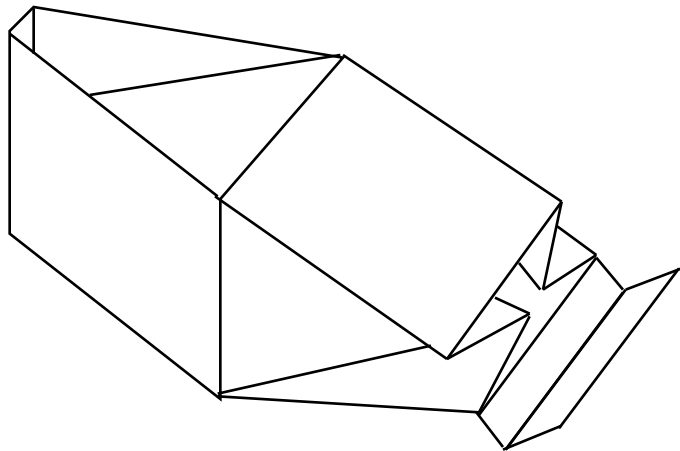
Dashed lines are scores.
Use "BOTTOM" side of
Boxmaker Originale (tm)

**Can easily be made
with the Boxmaker
Originale (tm).**



Notes:

- 1 Fold into tube shape
- 2 Outside of glue flap is glued to inside of opposite panel.
- 3 Four sides collapse in.
- 4 End tabs slip into openings at ends. One tab can be glued in place



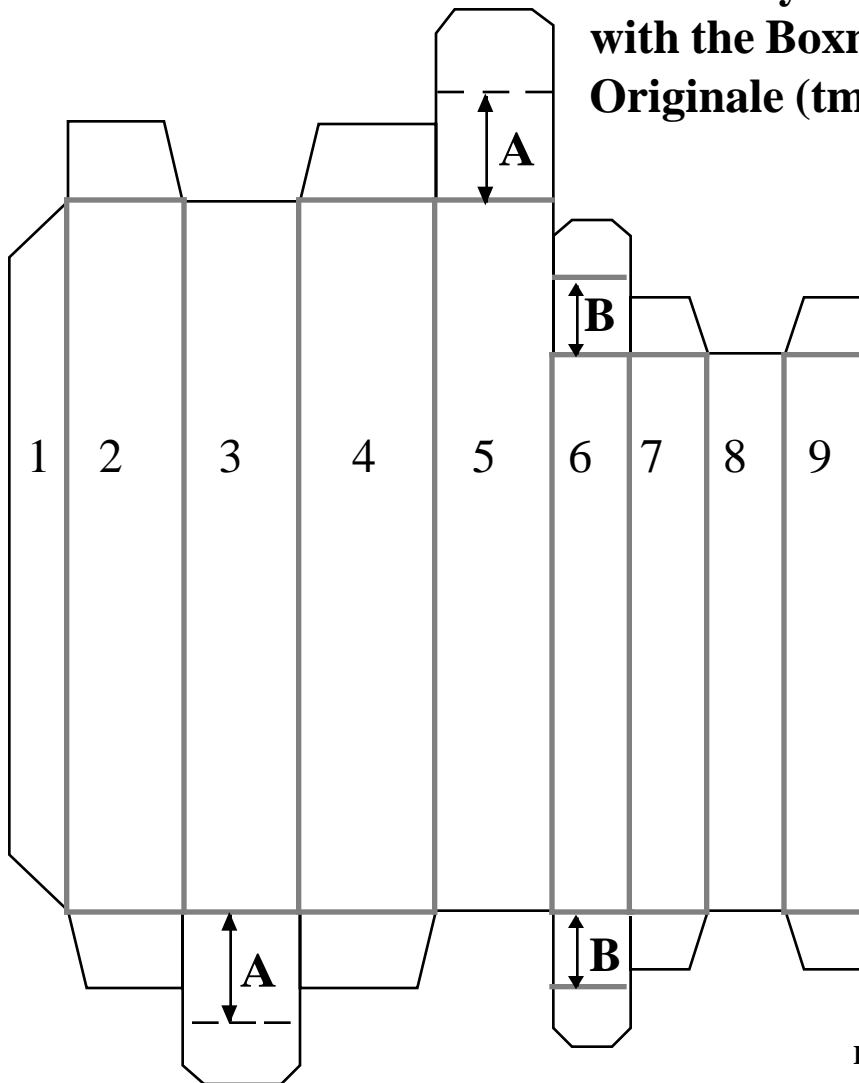
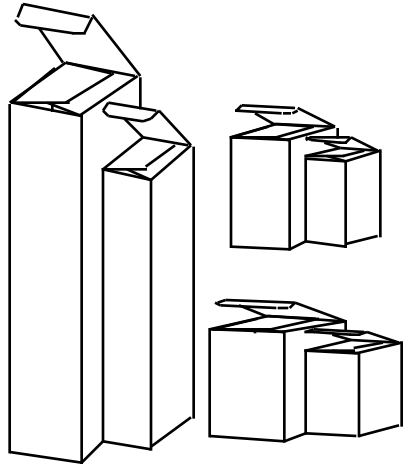
TWO JOINED BOXES -- can be made in any size you choose from ONE sheet.

- 1 Use side marked "BOTTOM" on Boxmaker Originale (tm) to make 10 vertical scores and 9 horizontal scores. Pick any dimensions at 1/2 " intervals for the length and width of the panels. These scores define the outside dimensions of the layout and all panels.
- 2 Use scissor or craft knife to cut outline of box along appropriate scored lines
- 3 Taper and trim 12 flap panels as shown
- 4 Fold up and glue

Can be made in any proportions -- follow these rules

- 1 Panels 2 and 4 are same width and are the same dimension as **A**
- 2 Panels 3 and 5 are same width
- 3 Panels 6 and 8 are same width
- 4 Panels 7 and 9 are same width and are the same dimension as **B**
- 5 Panels 2 to 5 are same height
- 6 Panels 6 to 9 are same height

Can easily be made
with the Boxmaker
Originale (tm).



ASSEMBLY

- 1 Panels are numbered in drawing
- 2 Panels 1 to 5 wrap into a tube.
- 3 Glue outside of panel #1 to inside of panel #5 (use glue gun for all gluing)
- 4 Panels 6 to 9 wrap into a tube
- 5 Glue outside of panel #9 to inside of panel #5
- 6 Fold in flaps at both ends and you have two joined boxes

Please refer to Catalog # 10-02 when ordering

BOX WITH HANG-TAB AND WINDOW
USE CARDSTOCK ABOUT .018" TO .022" THICK

