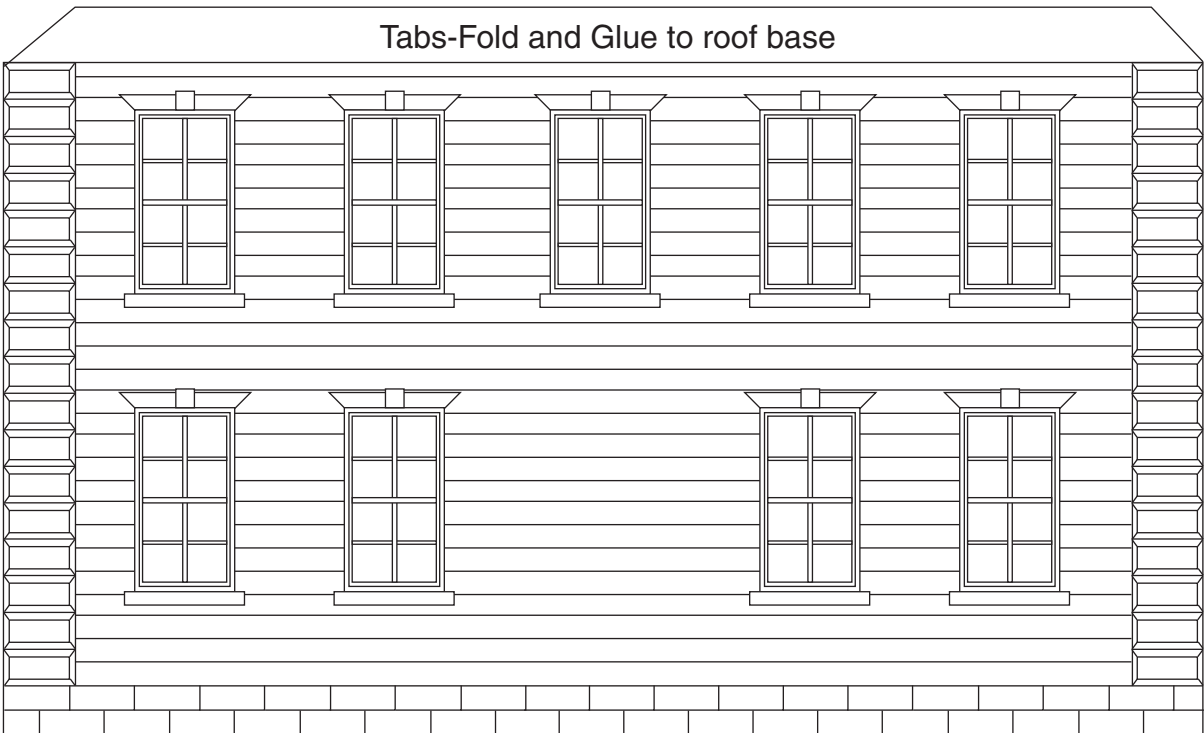


Tabs-Fold and Glue to roof base

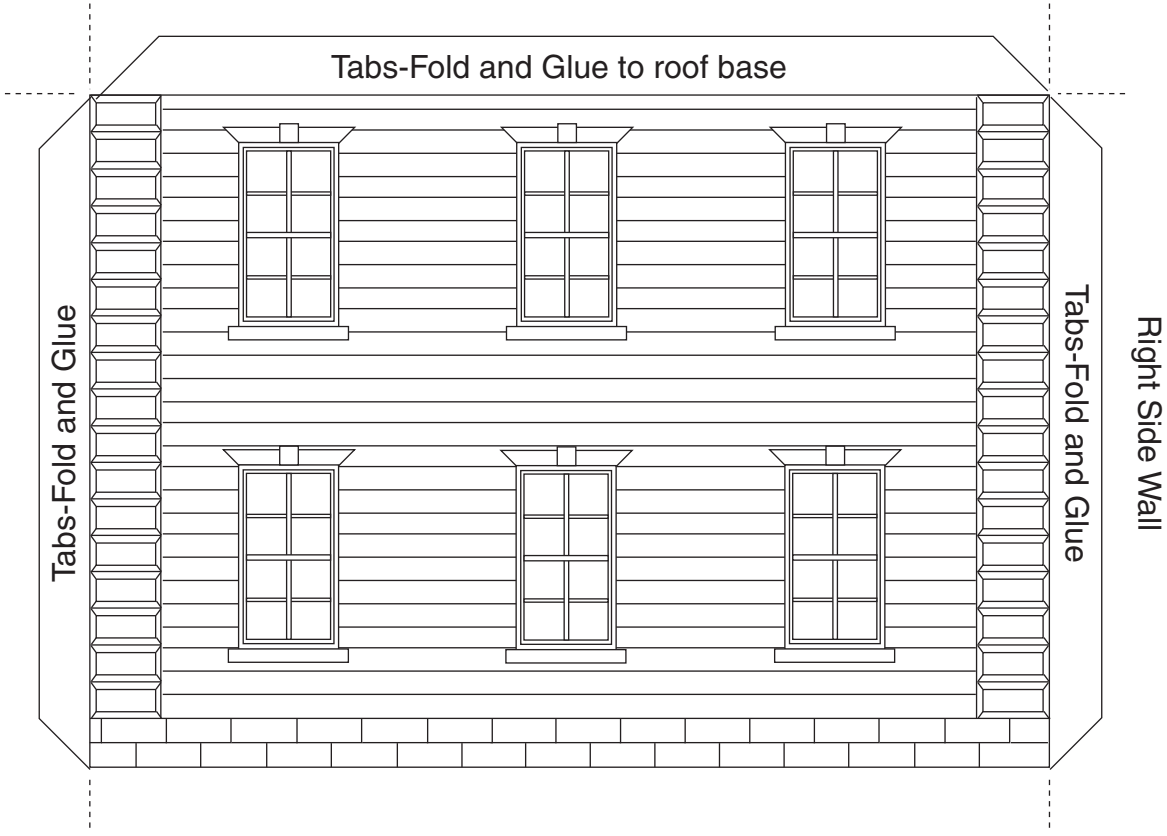
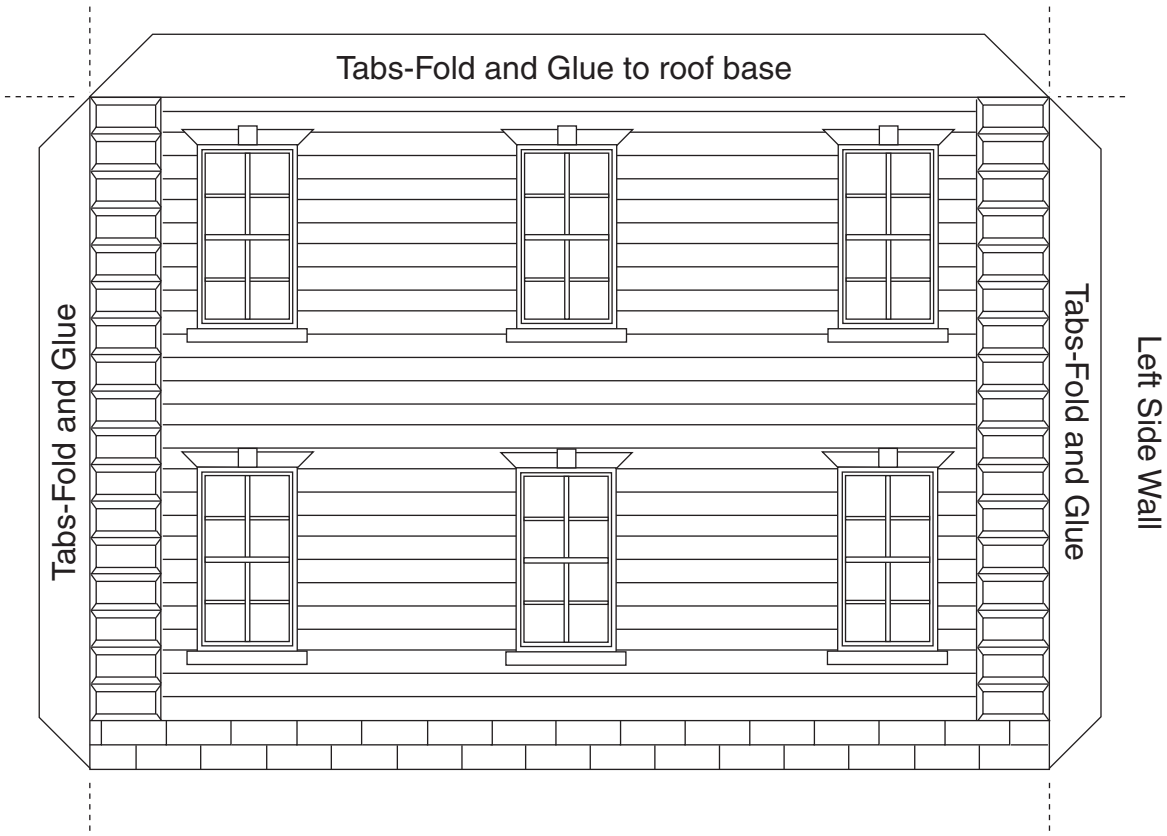


House Front

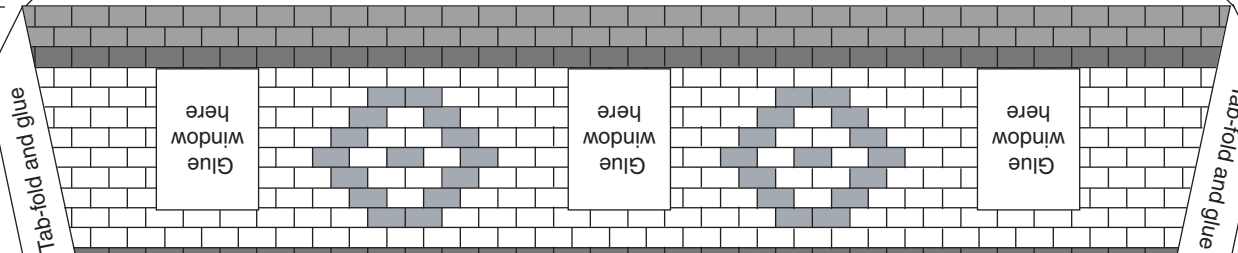
Tabs-Fold and Glue to roof base



House Back



Tab-fold and glue to roof base



Tab-fold and glue

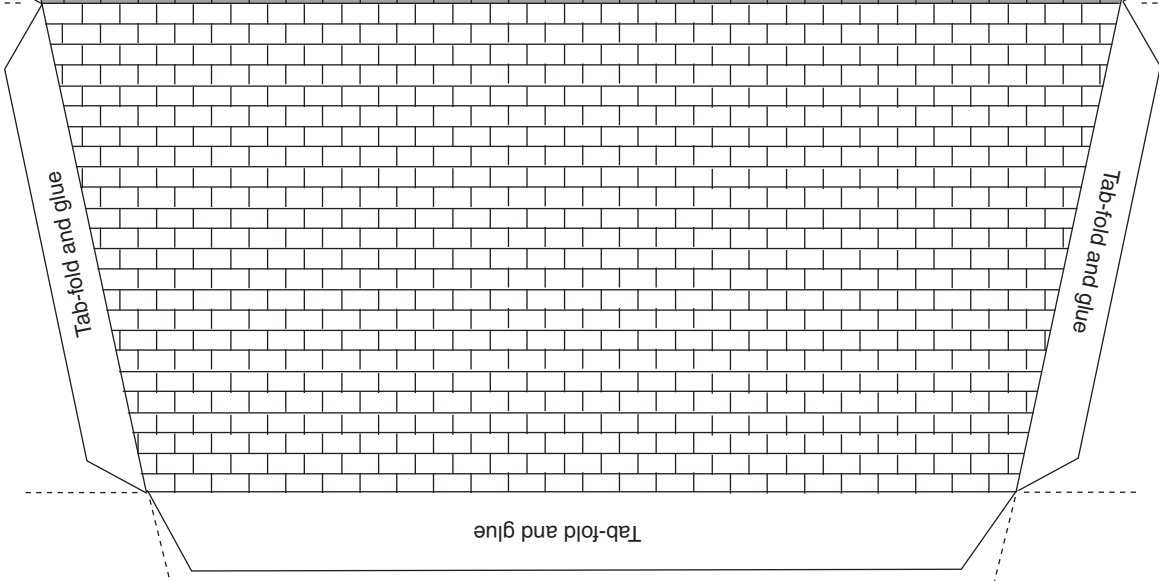
Tab-fold and glue

Glue window here

Glue window here

Glue window here

Roof Front

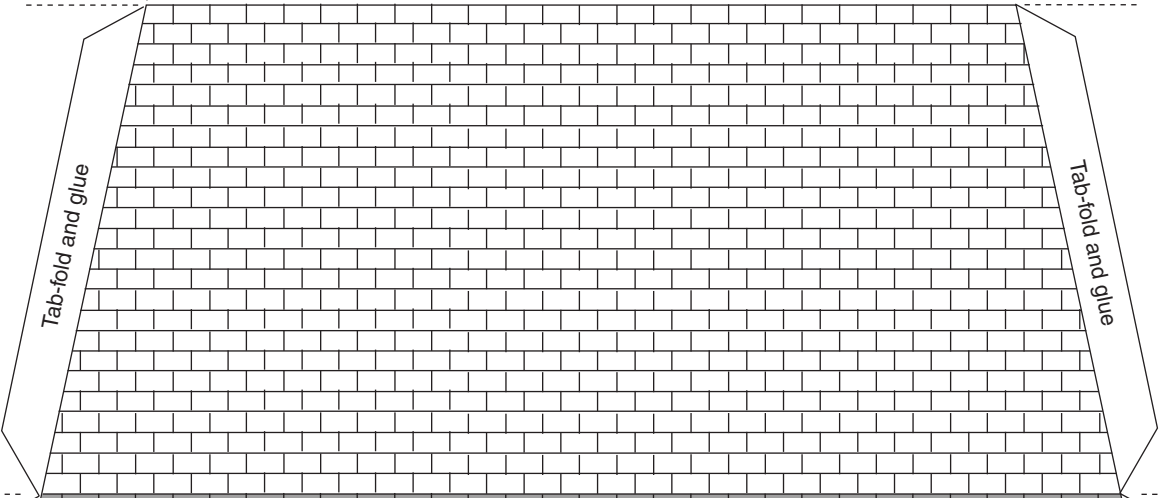


Tab-fold and glue

Tab-fold and glue

Tab-fold and glue

Roof Back



Tab-fold and glue

Tab-fold and glue

Tab-fold and glue

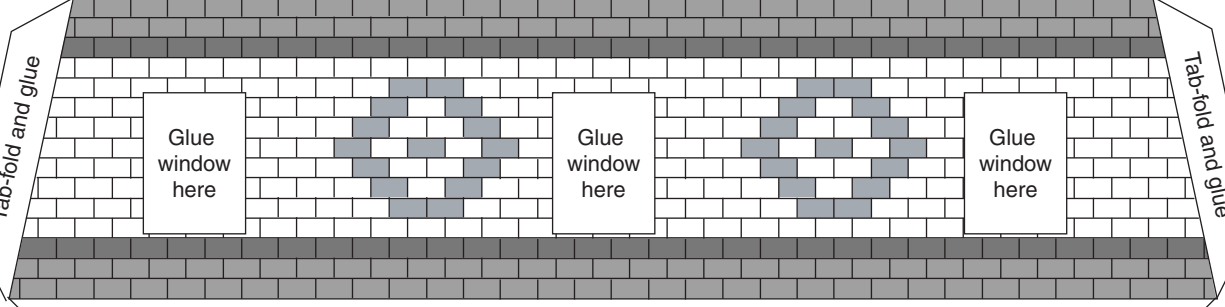
Tab-fold and glue

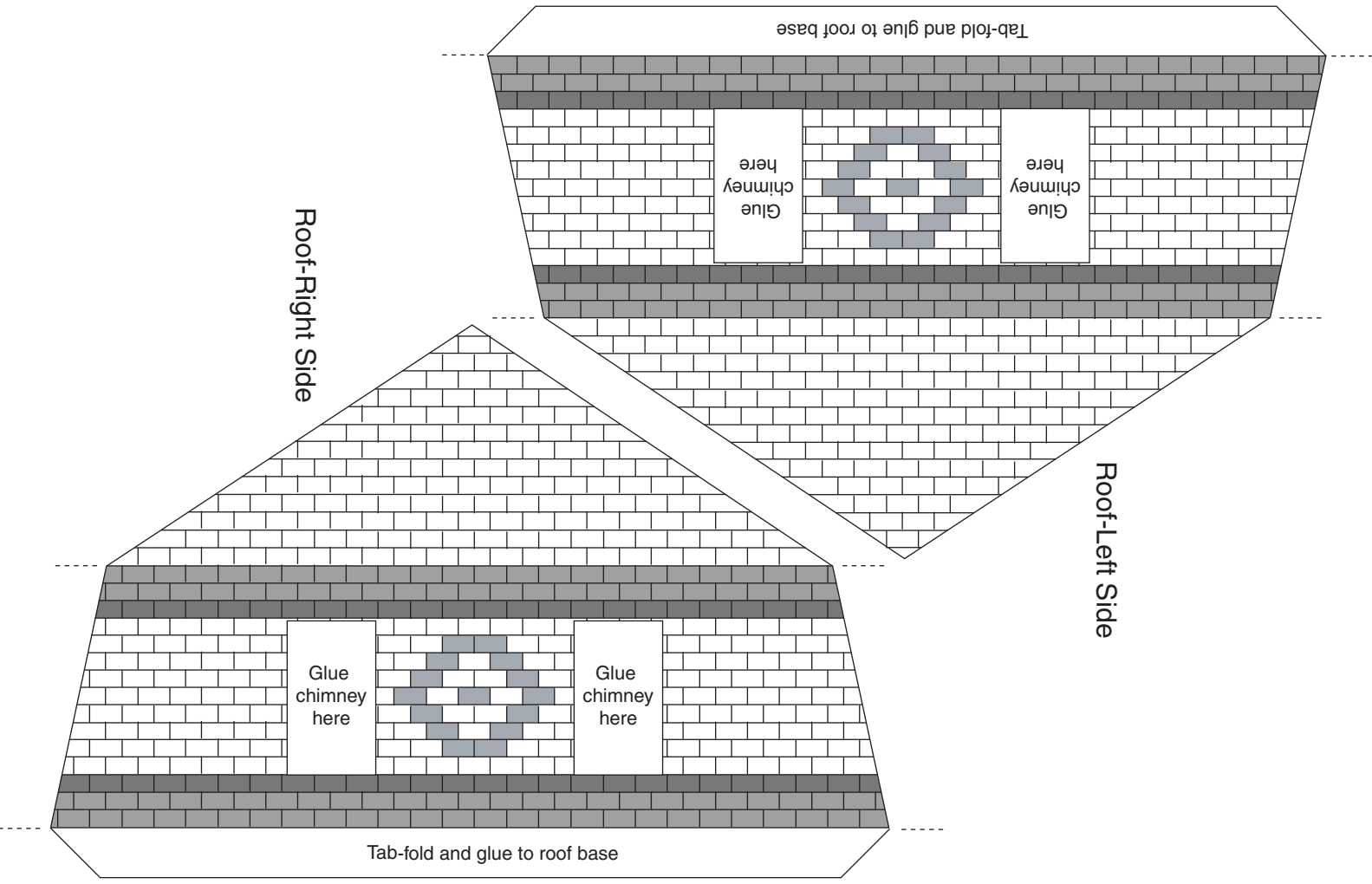
Glue window here

Glue window here

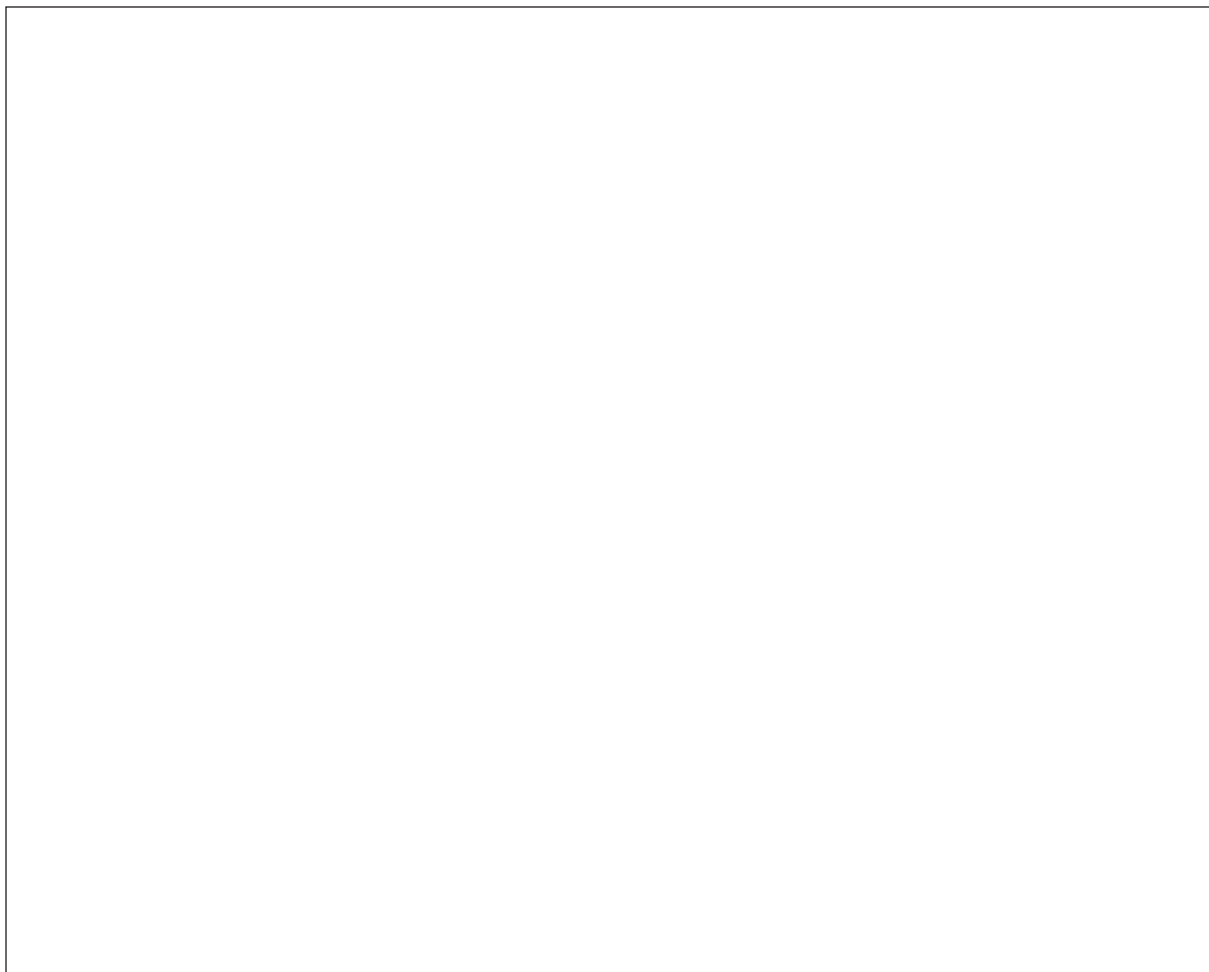
Glue window here

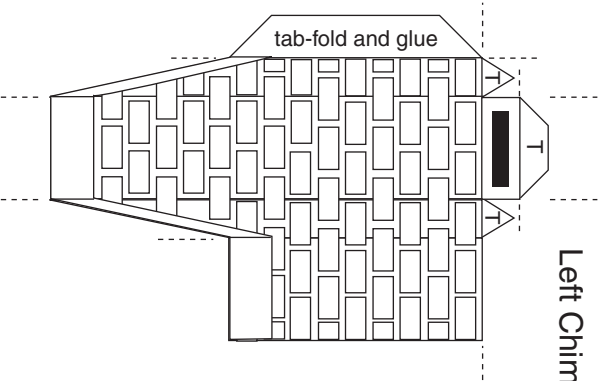
Tab-fold and glue to roof base



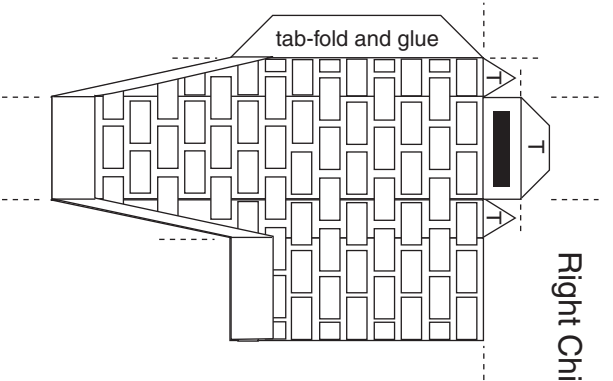
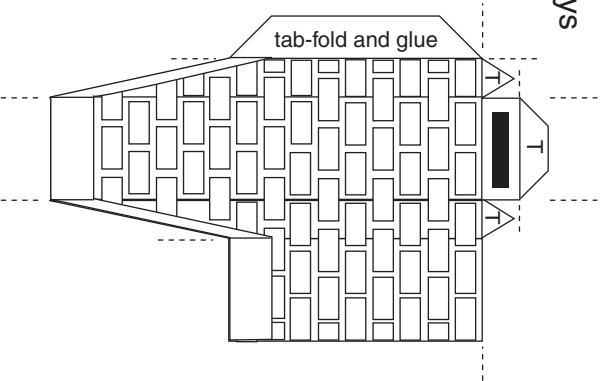


Roof Base-
Glue roof to this base then glue
opposite side to four walls of building

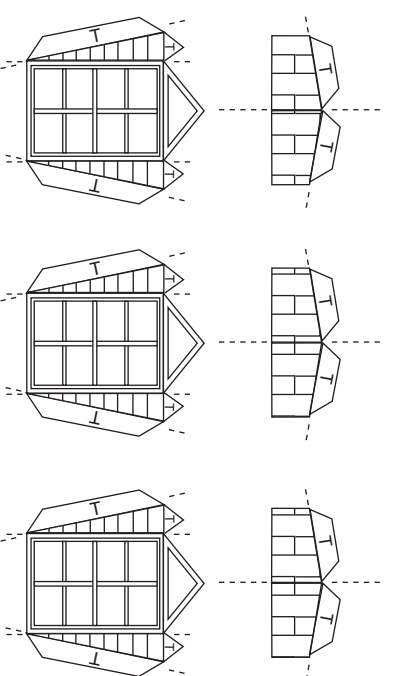
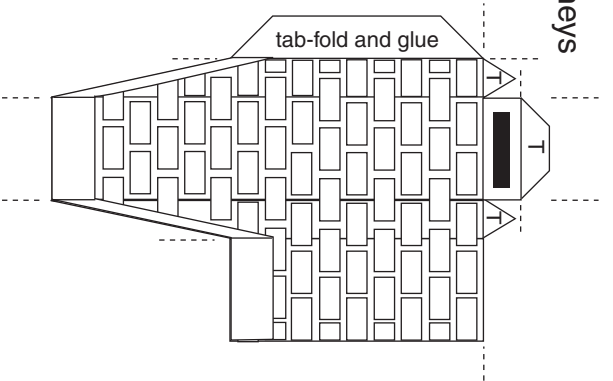




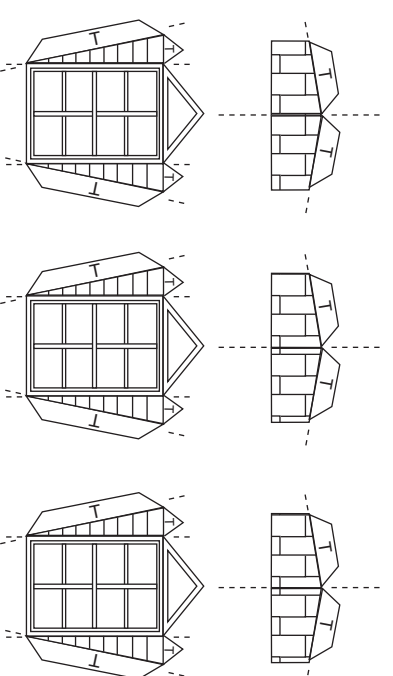
Left Chimneys



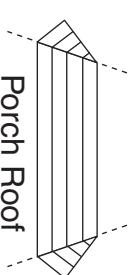
Right Chimneys



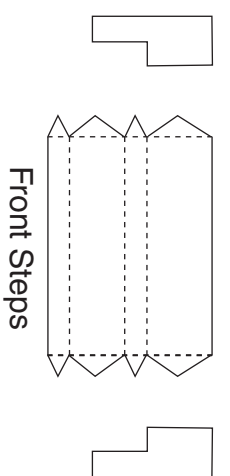
Front Second Story Windows



Back Second Story Windows



Porch Roof



Front Steps