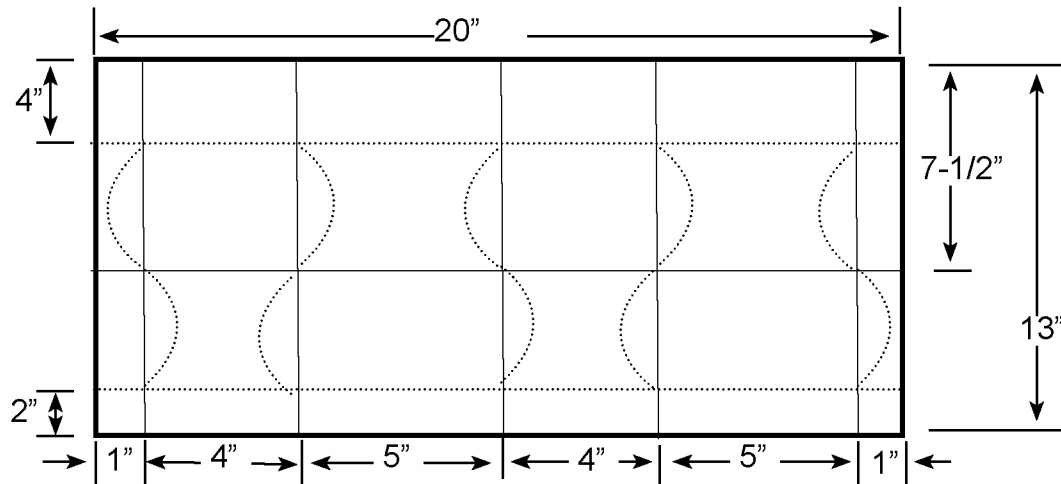


CARDSTOCK BOX WITH FOUR DOUBLECURVE PANELS -- 5" X 4" X 7"

(DRAWING IS NOT TO SCALE). SEE PHOTO BELOW -- BOX ON LEFT AND IN CENTER



- 1) Start with an 13" x 20" piece of cardstock.
- 2) Straight score at 4" from top edge and 2" from bottom edge.
- 3) Pencil mark lines at 1, 5, 10, 14 and 19" from left edge
- 4) Pencil mark line at 7-1/2" from top edge
- 5) Score two 8" diameter CURVULATOR scores on each of the 5 vertical pencil lines as shown -- starting each on the scored lines running horizontally and ending each on the penciled centerline. The object is to have each set of scores meet each other to form a smooth transition from concave to convex. You will wind up with five "S" shaped curves centered on each edge of the box. (2 of these will later overlap, leaving you with four edges)
- 6) Cut on the two inch-long lines and the four inch-long lines at the bottom and top edges --- thereby separating the bottom and top flaps.
- 7) Flex all the fold lines back and forth to limber them up.
- 8) Cut away and discard the material to the right of the rightmost curved score
- 9) Cut away and discard the 4 corner rectangles on the sheet.
- 10) Fold up and (a) glue together the bottom flaps and (b) glue the thin left panel inside the rightmost panel -- being careful to align the curves appropriately.
- 11) Figure out some way to close the top flaps so they can be easily reopened --- punched holes and ribbons will work -- or two interlocking slots cut in the larger overlapping flaps



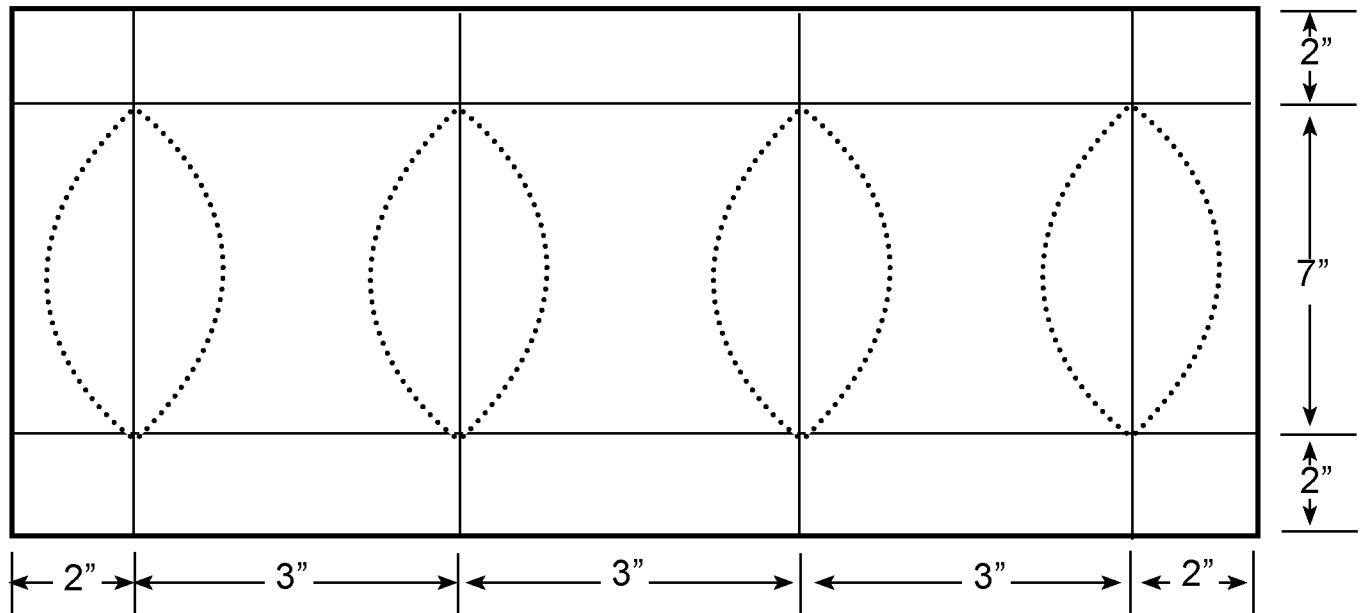
The two boxes in the background are doublecurve boxes

NOTE: These instructions tell you to make pencil lines where you are going to score. This can be ignored once you understand what you are doing. The pencil lines are only to help you while you are getting started.

NOTE: If you are using a "BOXMAKER ORIGINALE", the straight scores needed to make boxes should be made by placing the cardstock against the guide rail on the side of the boxmaker table marked "BOTTOM". The distance from the guide rail on the "BOTTOM" side is essentially equal to the nominal spacing while the spacing on the "TOP" side is somewhat less.

A 3 x 3 x 7" CARDSTOCK BOX WITH CURVE-SCORED CONCAVE PANELS ON EACH EDGE OF THE BOX. SEE PHOTO ON PREVIOUS PAGE -- FRONT RIGHT

- 1) Start with an 13 x 11" sheet of cardstock (drawing is not to scale)

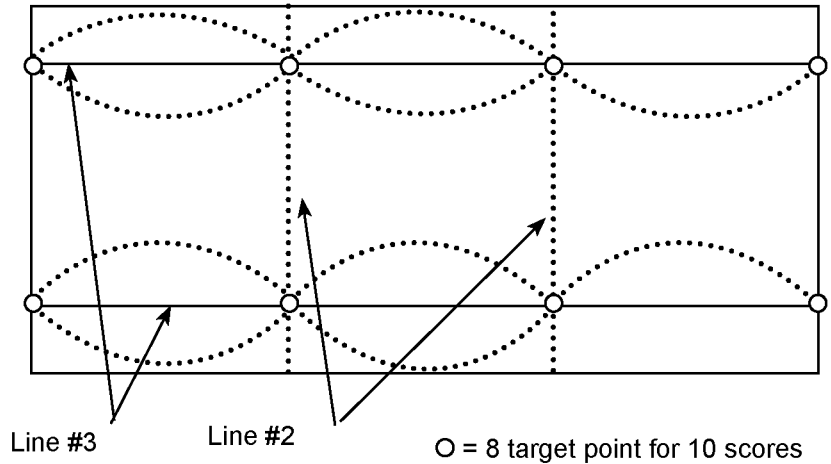


- 2) Draw four light pencil lines at 2", 5", 8" and 11" from a short edge.
- 3) Draw two light pencil lines each 2" from the 13" long edge as shown.
- 4) Score eight curved lines as shown using the 12" diameter scoring slot -- so the score just crosses the intersection of (a) the vertical drawn lines and (b) the lines 2" from each long edge. These eight scores delineate 4 football-shaped areas.
- 5) Cut on the eight 2"-long lines -- from the two long edges to the scores.
- 6) Straight score on the two lines drawn in #3 above
- 7) Flex all scored lines back and forth until they become limber
- 8) Fold the box into a sleeve with a 3" x 3" cross section --- overlapping the 2" wide panels and gluing them so they form the fourth 3" wide side
- 9) Force the four football shaped edges into a convex (pushed-in) shape. The 2" wide panels (there will be 8 of them) are the top and bottom flaps of the box. You can modify, trim and glue them in a variety of ways to get a closure you like.

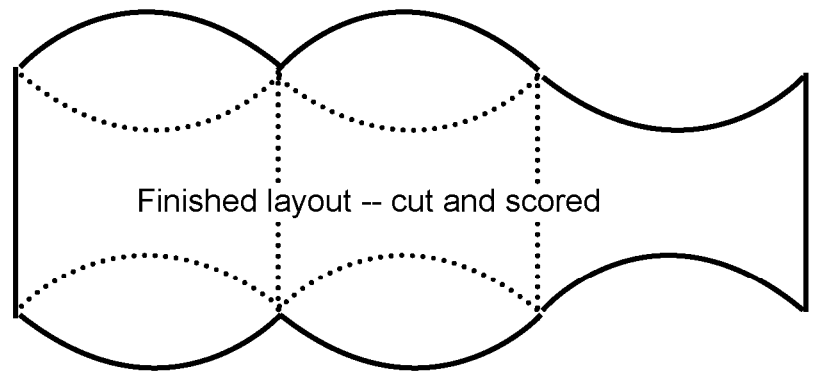
See the "Notes" on the previous page.

HOW MANY "SIDES" AND "EDGES" WOULD YOU SAY THIS BOX HAS?

Basic Cardstock Pillow Boxes : The photo below shows 3 decorated pillow boxes each about 8" long x 5" wide x 2" thick.



1. Note the drawings are not to scale.
2. Start with a piece of cardstock with (a) a length of 3 times the width of the box you want to make and (b) a width equal to the length of the box you want to make plus twice the thickness of the box you want to make.
3. For instance if the finished box is to be 8" long x 5" wide x 2" thick -- the cardstock should be 15 inches long [3 x 5"] and 12 inches wide [8 + (2 x 2)].
4. Draw a light erasable pencil line parallel to 2" from each long edge -- shown by lines #3 in the drawing below.
5. Score a straight line at 5" and 10" from one short edge -- shown by lines #2.
6. Score lines between the 8 intersection points as shown (ten scores in total) -- picking the radius of the CURVULATOR scoring slot that just fits the cardstock blank as shown in the top drawing.
7. Cut away the excess material, leaving you with a blank as shown in the bottom drawing.
8. Fold the 3 panels together -- gluing the outside of the right panel to the inside of the left panel. The right panel can be trimmed, leaving just enough material for a sturdy seam.
9. Gently fold in the end panels on both ends (they will overlap and hold the sides 2" apart) and you have a finished box.



These boxes can be scaled up or down to any size